

Municipal Stormwater Permits: What do they mean to you?

A perspective for industries and
developers in Washington State

Rachel McCrea, Municipal Stormwater Specialist
Washington State Dept. of Ecology

March 3, 2009

Philosophical Context

“non-point source”
meets “point source”



Programmatic versus site-specific permit

- Federal “Maximum Extent Practicable” standard
- Site-specific AKART

Illicit Discharges - Prohibited



Illicit Connections

- Industries: **Do you know where all your shop drains go?**
(trench drains, floor drains, sink drains...)
- Contractors: **Are your utility plans using up to date base maps?**
Make sure that is a sewer line, not a stormwater pipe.



Conditionally Allowed Discharges

Must be **de-chlorinated** (0.1 ppm), **pH adjusted** and volumetrically and velocity **controlled to prevent resuspension** of sediments in the stormwater system:

- Potable water, Water line flushing
- Hydrant testing
- Swimming pool, spa and hot tub water
- No cleaning water and back wash water!



Conditionally Allowed Discharges



Minimized through **public education** and **water conservation** efforts:

- Lawn watering and other irrigation runoff
- Street and sidewalk wash water (**Sweep first!**)
- Dust control water
- Routine external building wash (**No detergents!**)

Other Authorized Discharges

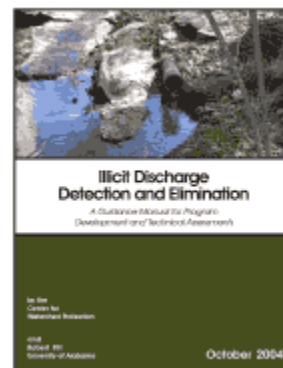
- Authorized by another Ecology NPDES permit
- Municipally reviewed and approved SWPPP addressing construction dewatering



- Emergency fire fighting activities

“So What?” Municipalities have permit obligations to...

- Have a local complaint hotline
 - 100% inspection rate for complaints (Phase I)
 - Investigation within 7 days of complaint/report (Phase II)
- Investigate illicit connections within 21 days / eliminate in 6 months
- Screen outfalls/system nodes for illicit discharges
- Inspect pollution generating businesses (Phase I pro-active requirement)



Runoff Controls for New and Redevelopment

- Lower thresholds for drainage requirements
- 5 Minimum Requirements for all projects subject to thresholds
 1. Do a stormwater site plan
 2. Do Construction Stormwater Pollution Prevention
 3. Do source control
 4. Preserve Natural Drainage Systems and Outfalls
 5. On-site Stormwater Management (LID?)



Runoff Controls for New and Redevelopment

Additional Minimum Requirements:

- Flow Control
- Treatment
- Wetlands protection



“So What?” Municipalities have permit obligations to...

- Inspect construction sites
 - Before clearing and grading
 - During construction for ESC
 - Prior to final occupancy for permanent stormwater controls
 - Every 6 months during home-building on large subdivision projects
- Inspect stormwater facilities and require system maintenance
- Take escalating enforcement action



How is it going?



- Municipal funding challenges
- Phase II deadlines still ahead
- Stormwater monitoring growth area
- Training needs \neq training opportunities
- Decant facilities are in short supply

**For more information about
Municipal Stormwater Permits**

[http://www.ecy.wa.gov/programs/wq/
stormwater/municipal/index.html](http://www.ecy.wa.gov/programs/wq/stormwater/municipal/index.html)